








# Octopus 10

Industrial Grade  
Windows® Based  
Touch Screen Computer



# An Advanced Tablet Computer for Fishermen

## BlueTraker Octopus 10 Benefits

- ✓ Simple Set-up and Install
-  Fully compliant with international fishing regulations
-  Adapts to Day/Night Modes Automatically
-  Intuitive Interface
-  Designed for Harsh Maritime Environments
-  Internal Rechargeable Back-up Battery



BueTraker Octopus 10 is a touch screen terminal with pre-installed applications for fisheries. Designed to be rugged and cost-effective off-the-shelf eLogbook / VMS solution for fisheries, it is ideal communication interface for sending catch reports, compliance forms and exchange other data with the Fisheries Monitoring Centre (FMC).

Octopus 10 features and functionalities:

- Out-of-the-Box ready to be used without additional interfacing, modifications and testing
- Pre-installed HMI application gives data access (e.g. position and speed of the vessel, fuel level, engine temperature) to the FMC
- Optional ERS compliant eLogbook application installation for reporting (Catch Report, Transhipment Report, Landing Report). eLogbook software applications from national, local software providers are applicable for installation if they qualify their product as »BlueTraker Certified Software«
- Optional OceanMail application installation for global text messaging from the vessel to FMC and vice versa. Third-party applications to be embedded on to Octopus 10 are subject of »BlueTraker Certified Software« approval process



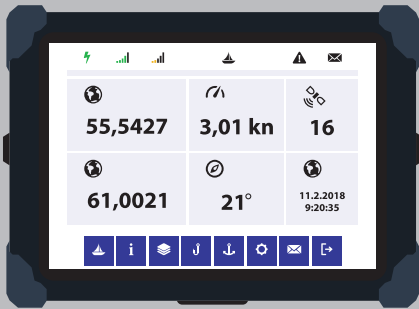
GPS Satellite



Iridium Satellite



Octopus 10



BlueTraker VMS

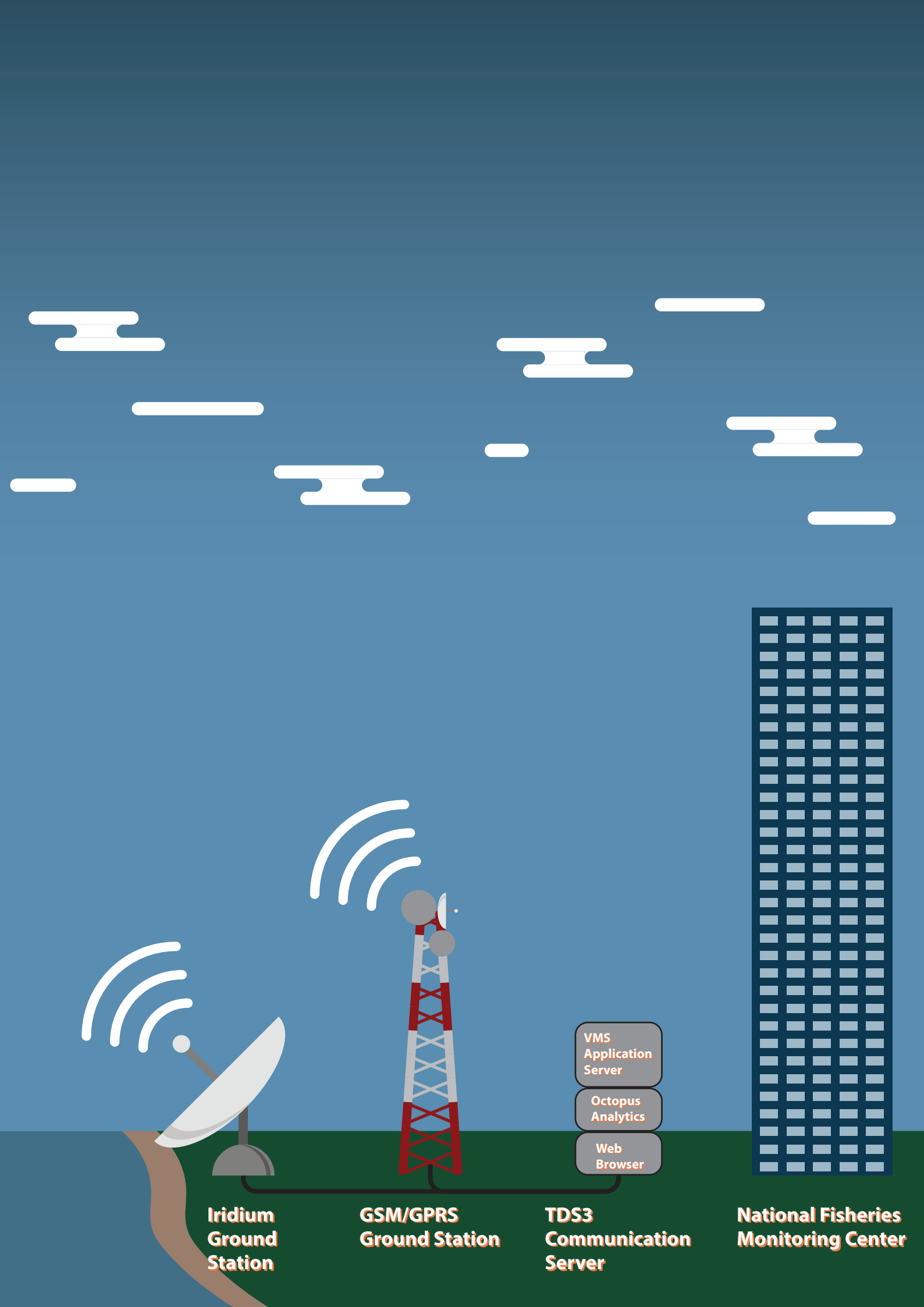
BlueTraker VMS



ConBox 2014

Vessel Power Supply

Vessel Ground Supply



**Iridium  
Ground  
Station**

**GSM/GPRS  
Ground Station**

**TDS3  
Communication  
Server**

**National Fisheries  
Monitoring Center**

# Features and Functionalities



Increase data accuracy and reporting efficiency of catch reports, while at the same time reduce the paperwork and data input requirements for fishermen.



View location, speed and heading data in a single screen.



Prevent laborious and error-prone data re-entry from paper reports.



Simple and intuitive eLog-book application that saves time comparing to paperwork re-entry.



Improve data processing by receiving fishing reports from precisely where and when the catch was made.



Quickly learn about Geo-zone changes, rule changes and quota limits adjustments.



Dynamically impose changes to regulations/rules for your fishing fleets (zone closures, quota changes, Geozones adjustments).



Benefit from a range of other third party applications.



More closely monitor fishing fleet (check that quota limits are not reached, ensure catch reports are completed / updated).



Receive incident alerts and storm warnings in real-time from FMC.



Keep fishermen safe with real time information about incidents at sea and storm warnings sent directly to the Octopus 10 tablet computer.

# BlueTraker Octopus 10 Technical Specification

## System

CPU	Intel® Bay Trail-M Quad Core N2930 1.83/2.16GHz
Memory	1 x 204-pin DDR3L SO-DIMM Socket 4GB
Storage	mSATA SSD 32GB
Operating System	Windows® 10 IoT Enterprise 2016 LTSB for Small Tablets
Display	TFT LCD 10.1 inch Touch type: Capacitive Backlight Type: LED Display Resolution: 1280 x 800 Luminance: 700 nits Sunlight readable
Data Security	TPM 1.2
Control Switch	1x Power ON/OFF button 3x Function Keys (user define)
Indicator	1x Power / 1x SSD / 1x Battery Status LED
Interfaces	1x USB 2.0 for ConBox connection

## Operation & Physical

Operating Temperature	-10°C (14°F) to +50°C (122°F)
Storage Temperature	-20°C (-4°F) to 70°C (158°F)
Environmental Protection	IP65 (Dust), IEC 60529 13.4 test Edition 2.1 2001-2 (Water), IEC 60529 14.1/14.2.5 test Edition 2.1 2001-2
Vibration	5 Hz to 500Hz 2g/5g rms, MIL-STD-810G-514.6,E-2 Sine 20Hz to 2000 Hz 7.69g rms, MIL-STD-810G-514.6,E-1 Random
Drop Test	Drop Height: 1200mm Drop Onto: 4 corner, 4 Edges, 2 Faces
Regulatory	CE / EN 60950-1 2005
Dimensions	306 x 206 x 40 (mm)
Weight	1.5Kg with batteries

## Power

DC/DC Adapter	12V DC – 36V DC
Battery Pack	2x DC 10.8V/ 3400mAh

## Installation

Mount	RAM Mount, Double Ball Shaft
-------	------------------------------



Distributor Label  
HERE

EMA d.o.o.

+386 3 42 84 800

Teharje 7b

sales@bluetraker.com

SI - 3000 Celje, SLOVENIA

www.bluetraker.com

EMA reserves the right to make changes to products or specifications without prior notice.

©2018 EMA - Wireless Data Solutions - All rights reserved.

All trademarks or registered trademarks are the property of their respective owners.

Part No: 14124