



Octopus 10

Multi Purpose Onboard Vessel Tablet Computer
Pre-configured for the Fishing Industry



An Advanced Tablet Computer for Fishermen

BueTraker Octopus 10 V4 is a rugged touch screen terminal with pre-installed applications for fisheries. Designed to be durable and cost-effective off-the-shelf eLogbook / VMS solution for fisheries, it is the ideal communication device for sending catch reports, compliance forms and exchange other data with the Fisheries Monitoring Centre (FMC).

- **Out-of-the-Box ready** to be used without additional interfacing, modifications and testing, within the BlueTraker environment.
- **Pre-installed HMI** application displays a vessel's telemetry data (position, speed, orientation, etc,...)
- Optional **ERS compliant eLogbook** application installation for reporting (Catch Report, Transshipment Report, Landing Report). eLogbook software applications from national, local software providers are applicable for installation if they qualify their product as »BlueTraker Certified Software«.
- Optional **OceanMail** application installation for global text messaging from the vessel to FMC and vice versa. Third-party applications to be embedded on to Octopus 10 are subject of »BlueTraker Certified Software« approval process.



BlueTraker Octopus 10 V4 Benefits

✓ Simple Set-up
and Install

🐟 Fully compliant with
international fishing regulations

📶 Mobile
Connectivity

💡 Windows 10

🚢 Designed to Sustain
Harsh Maritime Environments

🔋 Internal Rechargeable
Back-up Battery



Features and Functionalities



Increase data accuracy and reporting efficiency of catch reports, while at the same time reduce the paperwork and data input requirements for fishermen.



View location, speed and heading data in a single screen.



Prevent laborious and error-prone data re-entry from paper reports.



Simple and intuitive eLog-book application that saves time comparing to paperwork re-entry.



Improve data processing by receiving fishing reports from precisely where and when the catch was made.



Quickly learn about Geozone changes, rule changes and quota limits adjustments.



Dynamically impose changes to regulations/rules for your fishing fleets (zone closures, quota changes, Geozones adjustments, etc,...).



Benefit from a range of other third party applications.



More closely monitor fishing fleet (check that quota limits are not reached, ensure catch reports are completed and/or updated).



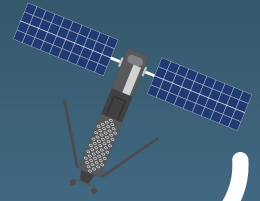
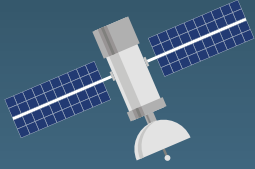
Receive incident alerts and storm warnings in real-time from FMC.



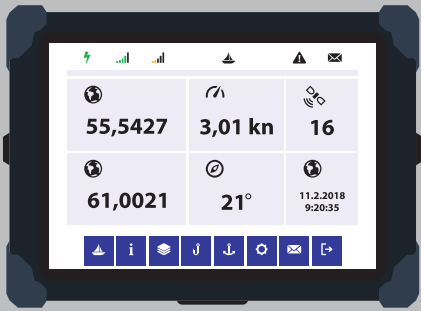
Keep fishermen safe with real time information about incidents at sea and storm warnings sent directly to the Octopus 10 tablet computer.

GNSS (GPS, GLONASS, GALLILEO)

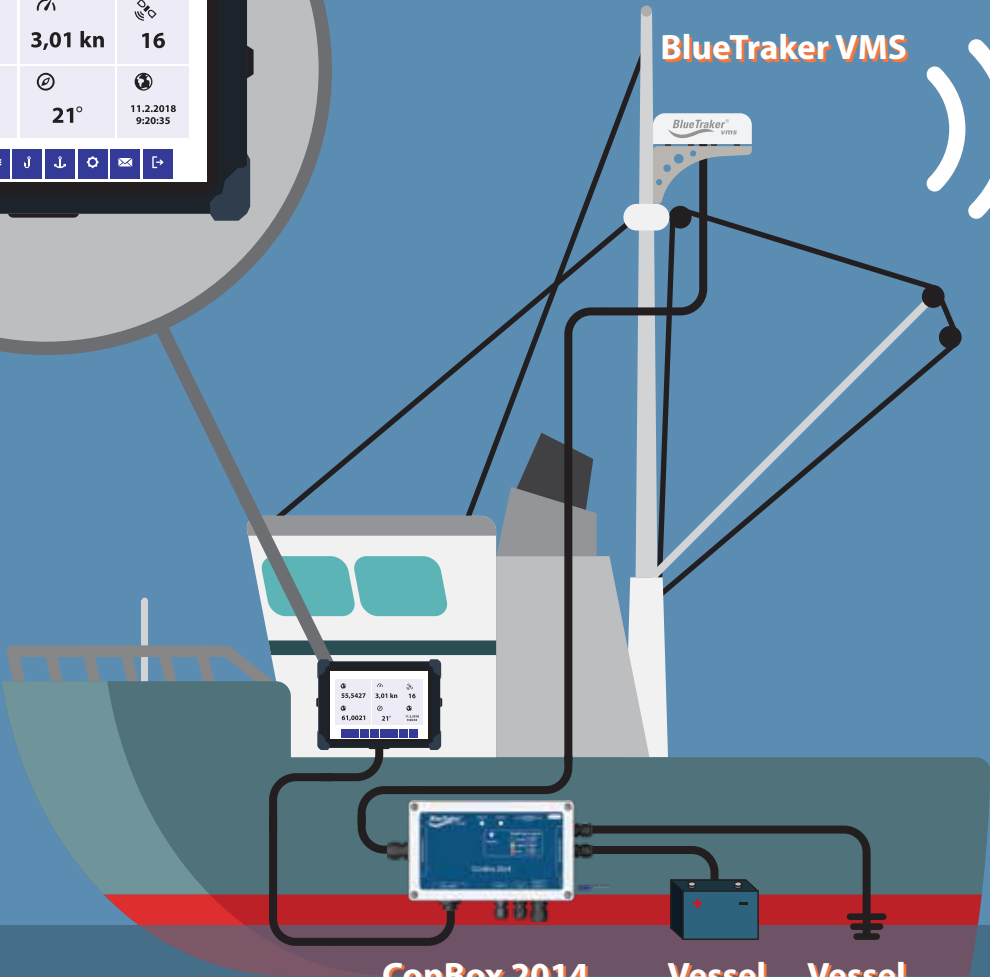
IRIDIUM SATELLITE



Octopus 10



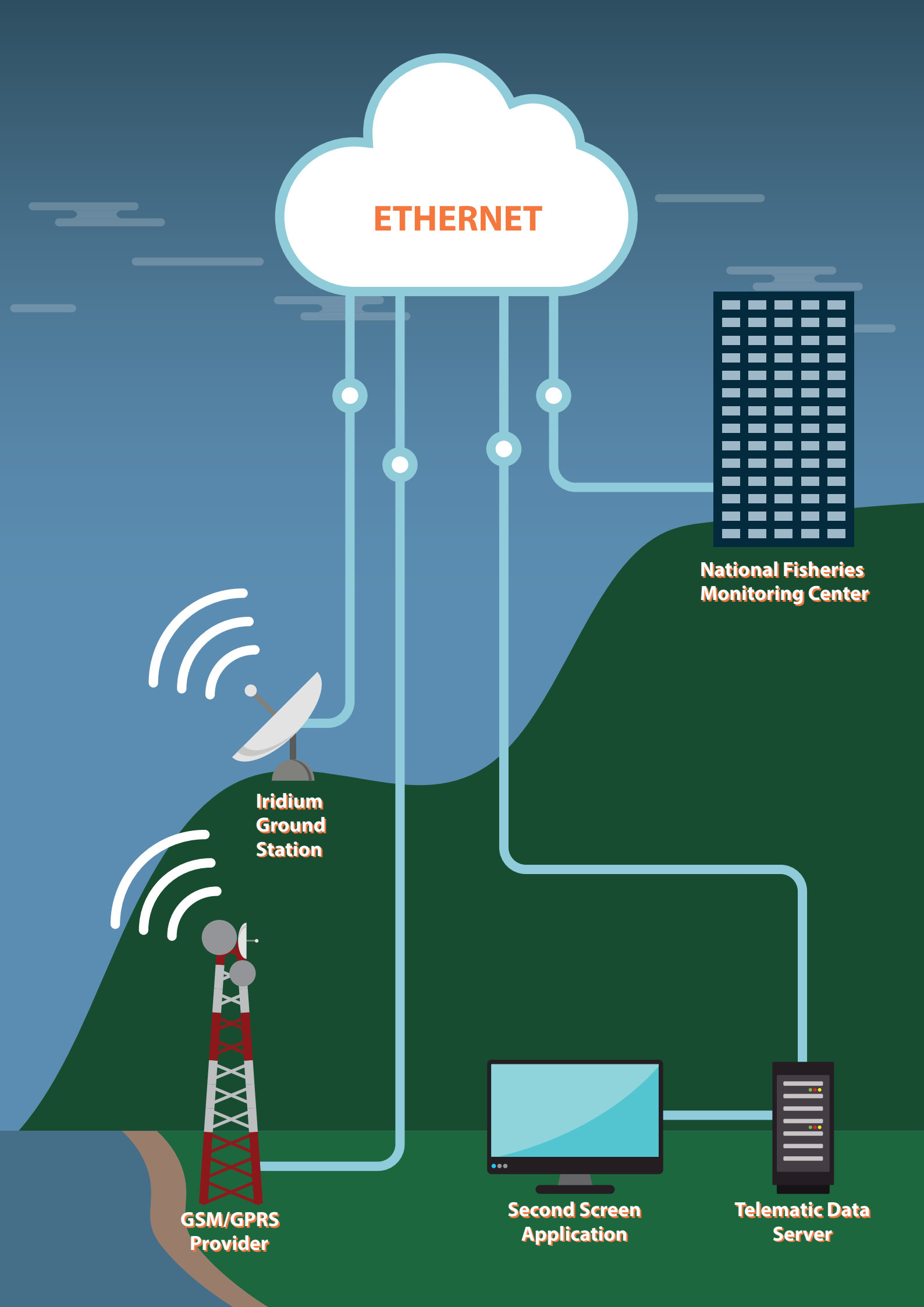
BlueTraker VMS



ConBox 2014

Vessel
Power
Supply

Vessel
Ground
Supply



ETHERNET

**National Fisheries
Monitoring Center**

**Iridium
Ground
Station**

**GSM/GPRS
Provider**

**Second Screen
Application**

**Telematic Data
Server**

BlueTraker Octopus 10 V4 Technical Specification

System

CPU	Intel Bay Trail-M Quad Core N2930 1.83/2.16GHz
Memory	1 x 204-pin DDR3L SO-DIMM Socket 4GB
Storage	mSATA SSD 64 GB
Operating System	Windows 10 IoT Enterprise
Display	TFT LCD 10.1 inch Touch type: Capacitive Backlight Type: LED Display Resolution: 1280 x 800 Luminance: 700 nits, sunlight readable
Data Security	TPM 1.2
Control Switch	1x Power ON/OFF button 4x Function Key
Indicator	1x Power / 1x SSD
Interfaces	1x USB 2.0, 1x USB 3.0, 1x Data Port for ConBox connection

Operation & Physical

Operating Temperature	-10°C (14°F) to +50°C (122°F)
Storage Temperature	-20°C (-4°F) to +70°C (158°F)
Environmental Protection	IP65 (Dust), IEC 60529 13.4 test Edition 2.1 2001-2 (Water), IEC 60529 14.1/14.2.5 test Edition 2.1 2001-2
Vibration	5 Hz to 500Hz 2g/5g rms, MIL-STD-810G-514.6,E-2 Sine 20Hz to 2000 Hz 7.69g rms, MIL-STD-810G-514.6,E-1 Random
Drop Test	Drop Height: 1200mm Drop Onto: 4 corner, 4 Edges, 2 Faces
Regulatory	CE / EN 60950-1 2005
Dimensions	306 x 206 x 40 (mm)
Weight	TBD

Power

DC/DC Adapter	10.8V DC – 36V DC
Battery Pack	1x DC 10.8V/3400mAh (optional 2x DC 10.8V/3400mAh)

Installation

Mount	RAM Mount, Double Ball Shaft
-------	------------------------------



Distributor Label
HERE

EMA d.o.o.

+386 3 42 84 800

Teharje 7b

sales@bluetraker.com

SI - 3000 Celje, SLOVENIA

bluetraker.com

EMA reserves the right to make changes to products or specifications without prior notice.

©2019 EMA - Wireless Data Solutions - All rights reserved.

All trademarks or registered trademarks are the property of their respective owners.

Part No: 14124